

DESIGN AND DEVELOPMENT OF MAXIMUM POWER POINT TRACKING IN PHOTO VOLTAIC CELLS

¹Mrs.P.Janaki, ²L.V.N.Umadevi, ³S.Vamsi, ⁴K.Lokesh, ⁵G.Uma Prasad

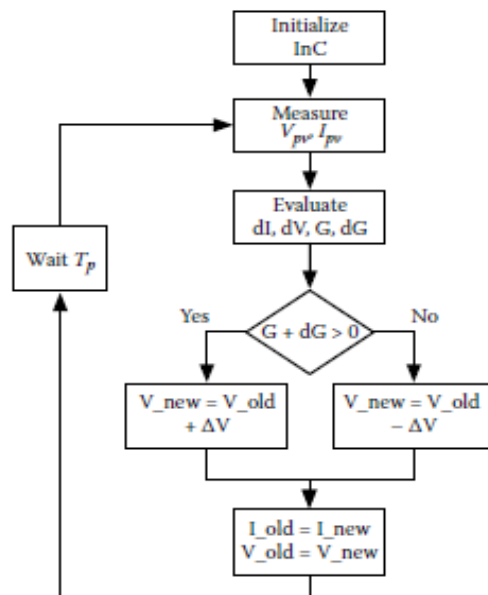
¹Associate Professor, ²Student, ³Student, ⁴Student, ⁵Student

¹ Department of EEE 1st Author,

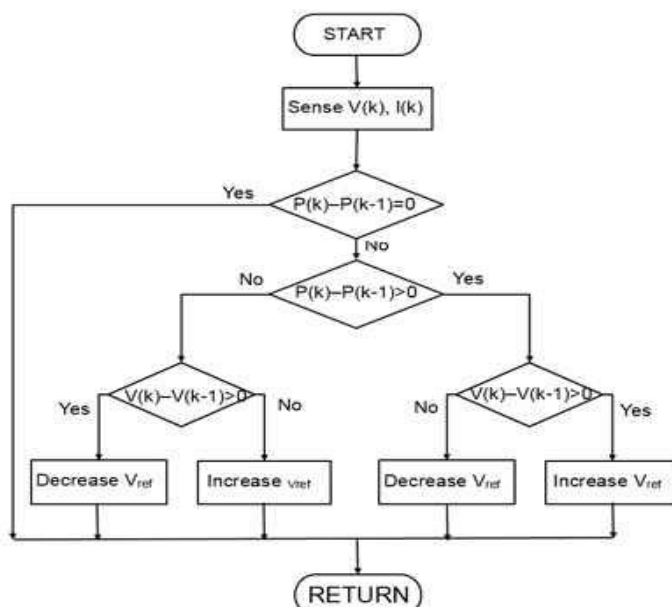
¹Lendi Institute Of Engineering &Technology, Vizianagaram, INDIA,

Received: February 22, 2019

Accepted: March 31, 2019

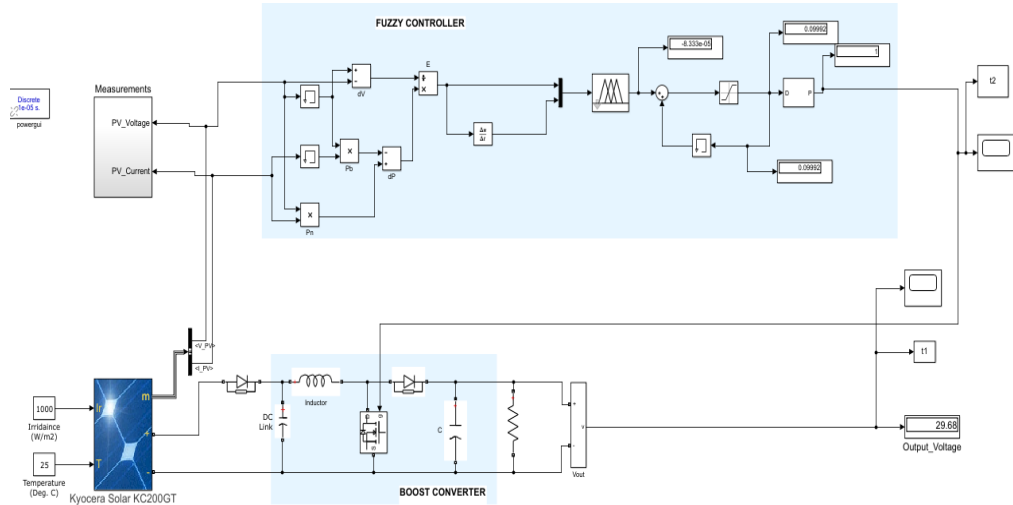


Flow chart of the incremental conductance method



Flow chart of the incremental conductance method

SIMULATION CIRCUITS AND RESULTS



Fuzzy logic system

CHARACTERISTICS OF PV CELL

PLOT OF PV PANEL VOLTAGE (V) Vs. TIME (SEC)

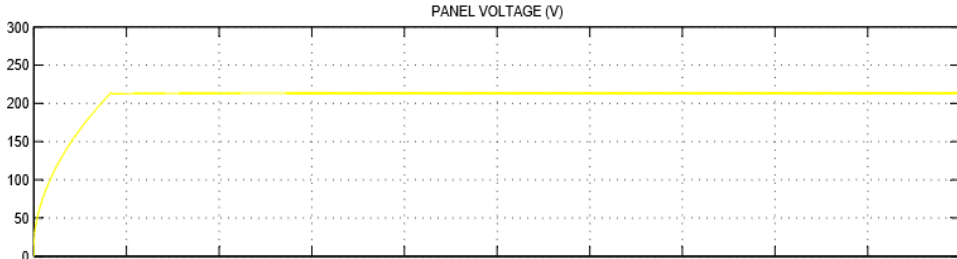
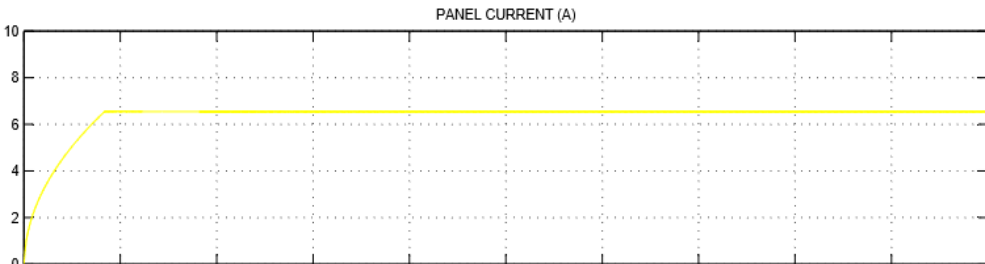


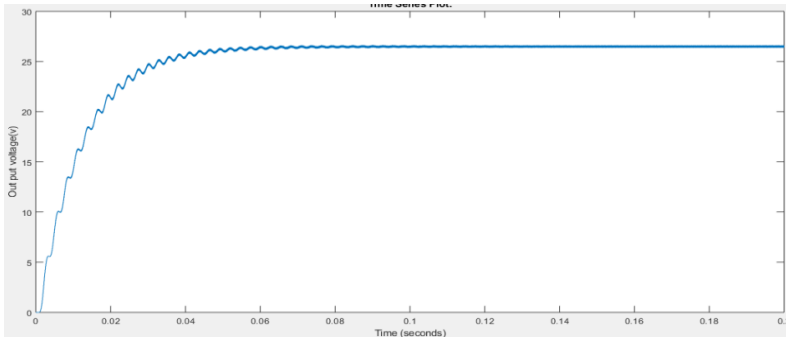
Fig 7.3: Voltage Vs. time of solar panel

PLOT OF PV PANEL CURRENT (A) Vs. TIME (SEC)



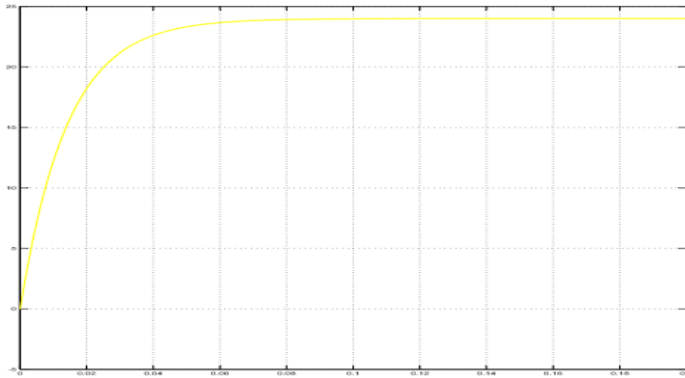
Current Vs. time of solar panel

RESULT OF PERTURB AND OBSERVE METHOD



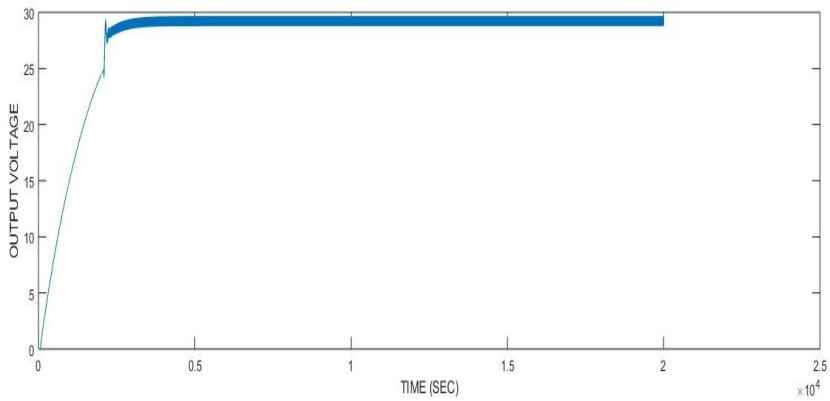
Plot of Output Voltage using P&O Vs. time

RESULT OF INCREMENTAL CONDUCTANCE METHOD



Plot of Output Voltage using INC Vs. time

RESULT OF FUZZY LOGIC CONTROLLER TECHNIQUE



Plot of Output Voltage using Fuzzy controller Vs. time